



CE

DEEP FREEZING



Control of the following functions :

- ✓ Cooling phase
- ✓ Deep freezing
- ✓ Preservation
- ✓ Automatic defrosting
- ✓ Core sensor
- ✓ 10 possible registered programs :
 - ✗ 1 Program «MANUAL»
 - ✗ 9 programmable deep-freezing cycles



577, rue Célestin Hennion
59144 Gommegnies - France
Tel : (33) 03 27 28 18 18
Fax : (33) 03 27 49 80 41
<http://www.eurofours.com>
email:infos@eurofours.com

PROGRAMMING INSTRUCTIONS : PSRG-S00R001-GB

Pictures are not contractual.
The company reserves the right to change specifications without notice - Copying forbidden

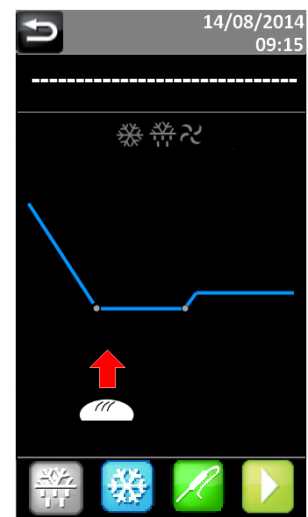
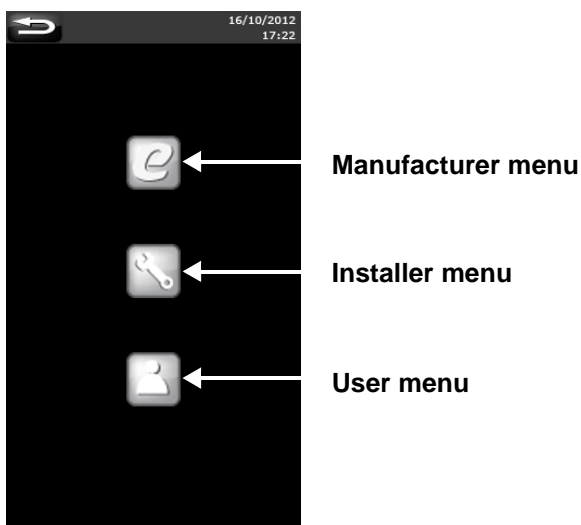
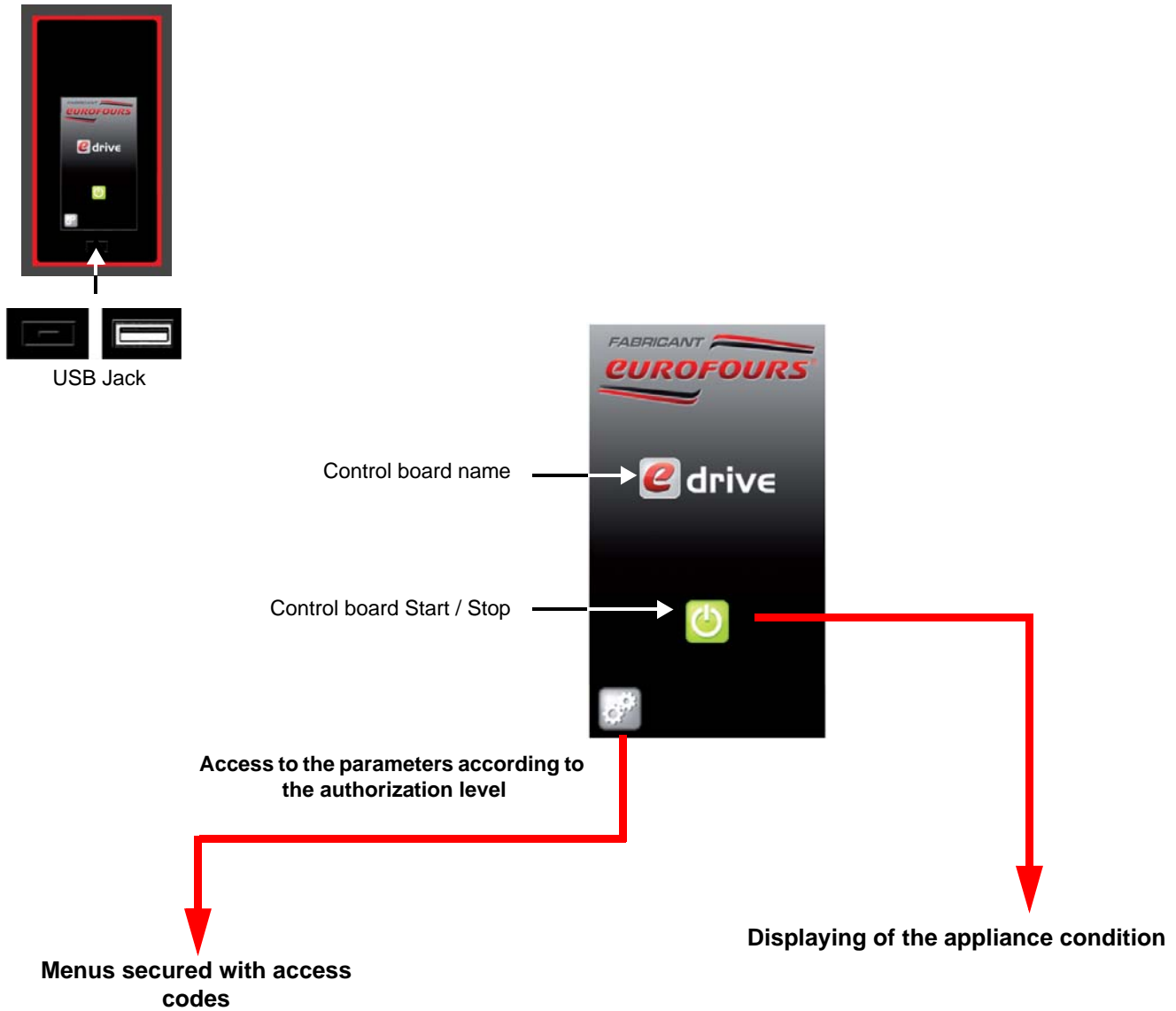
SUMMARY

PRESENTATION OF THE CONTROL PANEL-	p.3
ACCESS LEVEL	p.4
DEEP FREEZING CYCLE CURVE : SETTING RANGES	p.5
USER MENU - ACCESS TO THE PARAMETERS	p.6
Adjustment of programs	p.7
Date and Time adjustments	p.11
Setting of the regulator parameters	p.12
DOWNLOAD AND UPLOAD OF THE RECIPES THROUGH THE USB STICK-	p.13
Download of the programs from the control board	p.13
View of the programs file on a computer	p.14
Upload of the programs in the control board	p.15

The company reserves the right to change specifications without notice - Copying forbidden

PRESENTATION OF THE CONTROL PANEL

Take time to read the manual to familiarize yourself with the use of the appliance.










ACCESS LEVEL



The ability to modify the settings is governed by the authorization level :



No single setting can be modified. The only active keys are :

- ✓ Control board starting-up 
- ✓ Control board stop 
- ✓ Cycle starting 
- ✓ Cycle stopping 
- ✓ Manual defrosting allowed 
- ✓ PROGRAM «MANUAL» 
- ✓ Core sensor 
- ✓ Select a program: Viennoseries (9 Programs + «MANUAL»)



Selection and modification of the program «MANUAL». Any modification done to the program «MANUAL» during the cycle is automatically saved*.



Selection and **TEMPORARY** modification of the program in progress. The **MODIFICATION** of a program in progress is **POSSIBLE**, but **SAVING** of the modified program is **NOT POSSIBLE***.



Access to the programming .



* Look at the paragraph : «Fast modification of the cycle in progress» - USE INSTRUCTIONS

DEEP FREEZING CYCLE CURVE : SETTING RANGES

Cooling phase



T°loading of products : adjustable from -35°C to 0°C

Factory settings : -25°C

It is the real temperature to be reached inside the deep freezing compartment **BEFORE LOADING OF THE PRODUCTS.**

When set temperature is reached, the buzzer rings for 1mn and the display indicate that loading of products has to be done.
From this moment, the countdown of the phase is starting.



Request for loading of the machine

Deep freezing



Setpoint temperature of the core sensor : adjustable from -25°C to 0°C
Factory settings : -18°C

Deepfreezing time : adjustable from 00:10 to 06:00 (incrementation : 10 mn)
Factory settings : 02:00

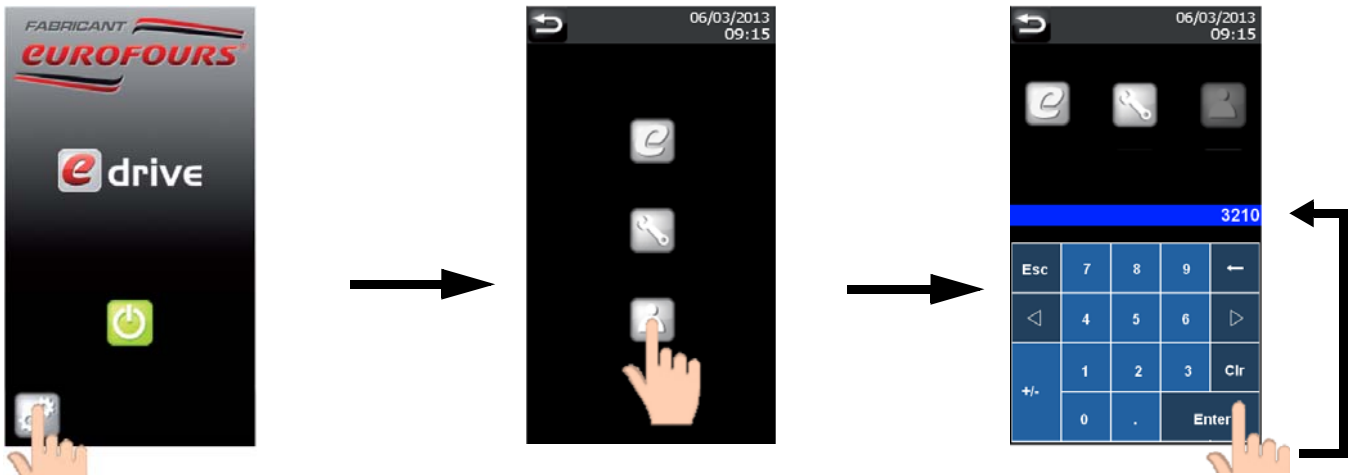
Preservation



Preserving T° : adjustable from -20°C to 0°C
Factory settings : -20°C

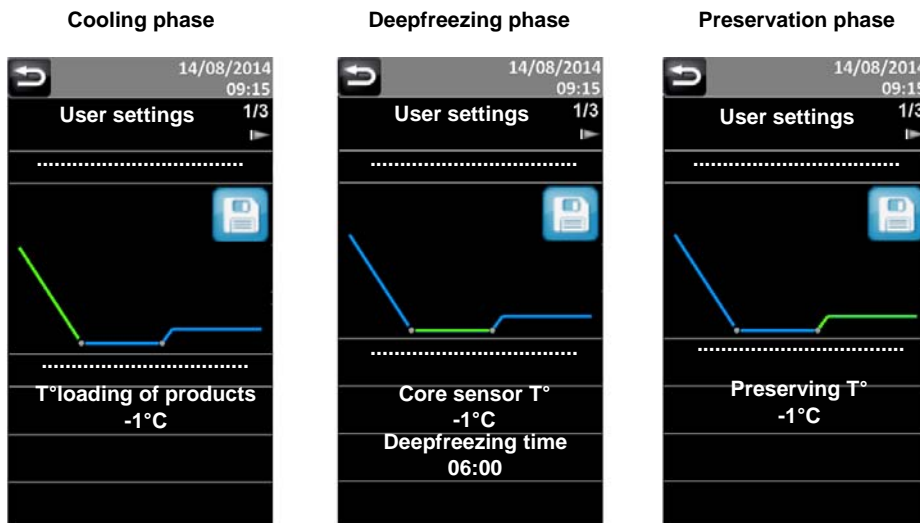
USER MENU - ACCESS TO THE PARAMETERS

When a cycle is in progress, the programming access is locked.

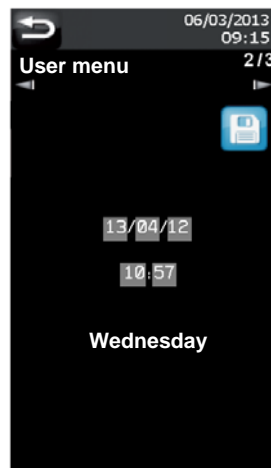


1/ Key in the code : 3210
2/ Validation

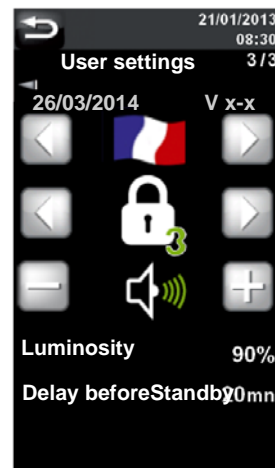
Adjustment of programs



Date and Time adjustments



Setting of the regulator parameters



Adjustment of programs

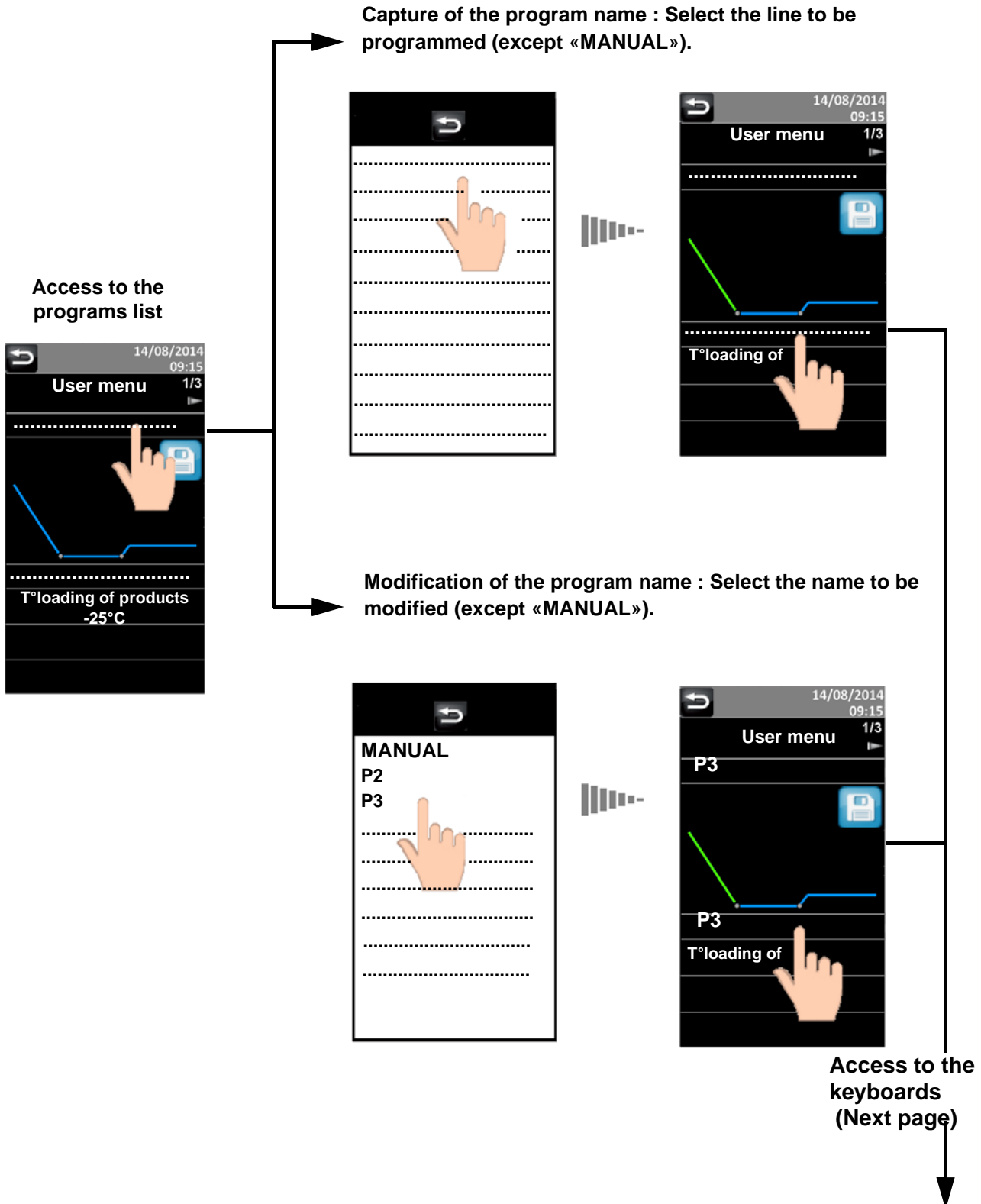


10 possible registered programs :

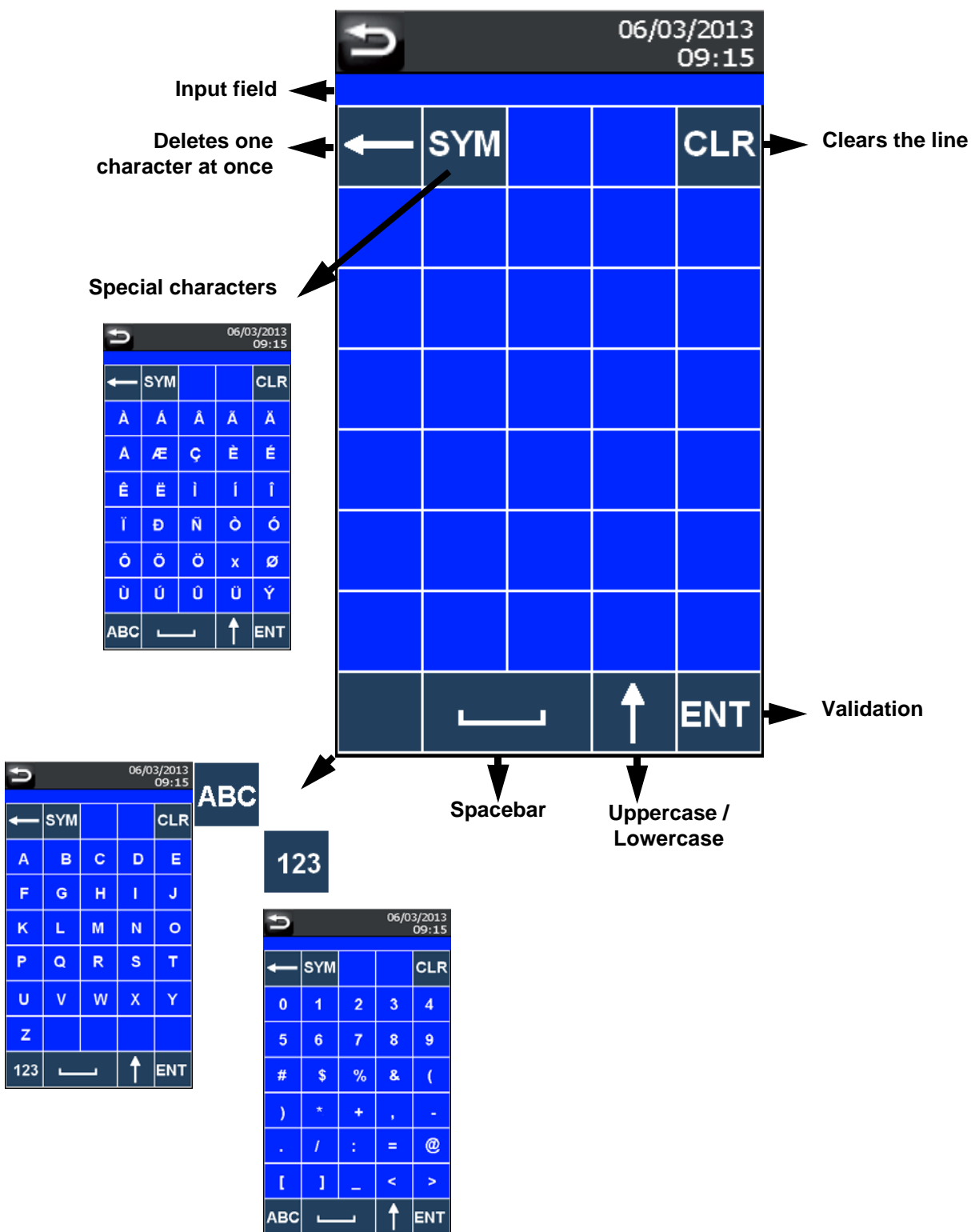
- ✓ 1 manual program
- ✓ 9 adaptable programs



«MANUAL» is a changeless program name.



The program name can be composed with letters, numbers and special characters.
 Number of characters available : 21



«MANUAL» is a changeless program name.

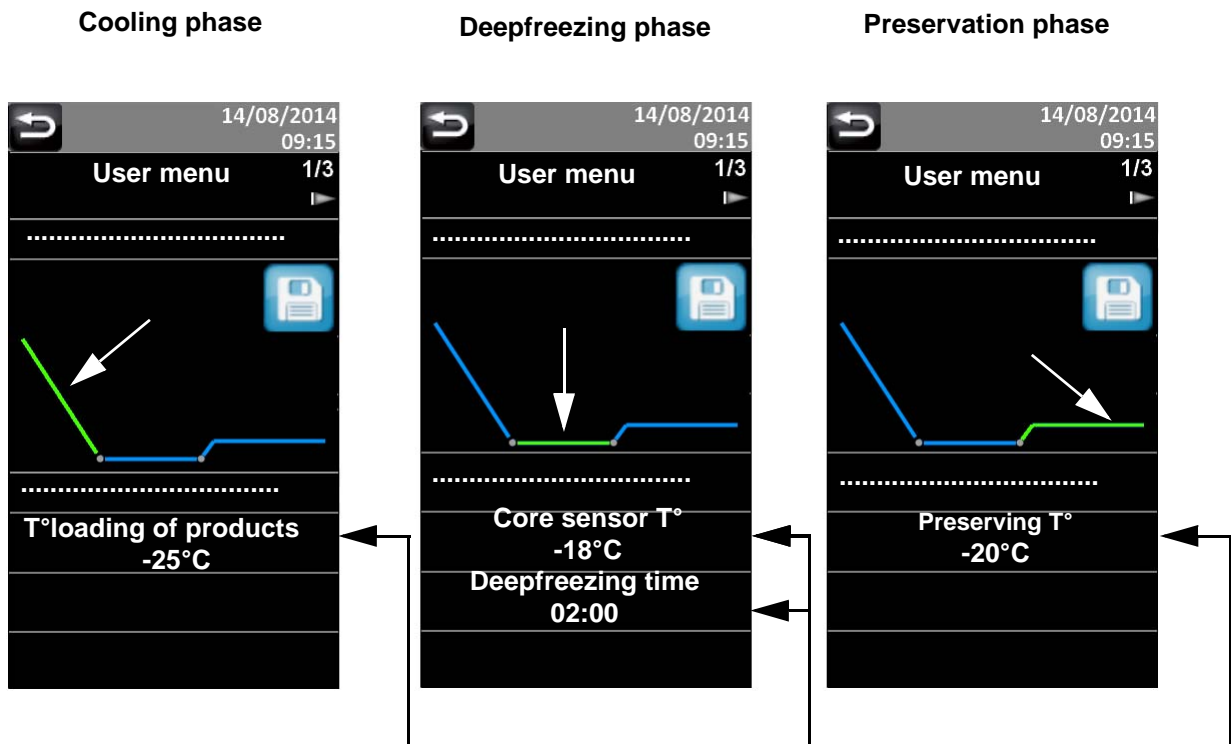
The flash freezing process consists to quickly freeze foodstuff products by exposing them at temperatures ranging from -18°C to -35°C (the airflow at very low temperature is used in our flash freezer).

With this method, the water contained in the cells will finely crystallizes limiting then damages to the cell membranes.

This is why you must **IMPERATIVELY** proceed with the **COOLING PHASE** to decrease the temperature inside the machine until it matches the freezing temperature **BEFORE LOADING THE PRODUCTS**.

After flash freezing, the products must be stored at a temperature inferior or equal to -18 °C.

Creation / Modification of a program : 3 Phases



Press the parameter to be adjusted



Key in the new value and register by pressing «ENTER»

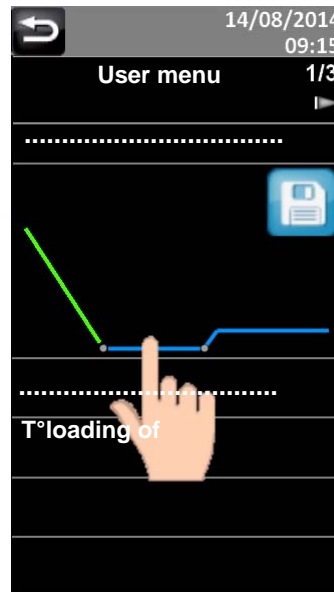
Cooling phase



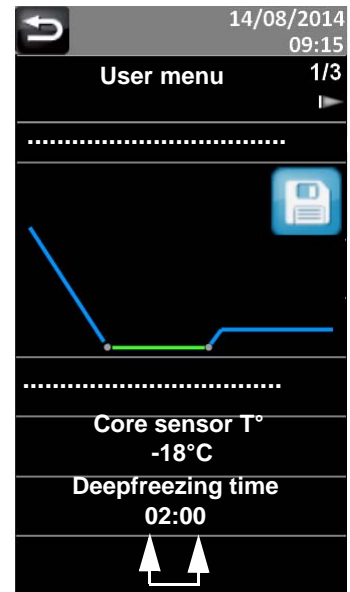
T°loading of products :

It is the real temperature to be reached inside the deep freezing compartment **BEFORE LOADING OF THE PRODUCTS.**

Deepfreezing phase

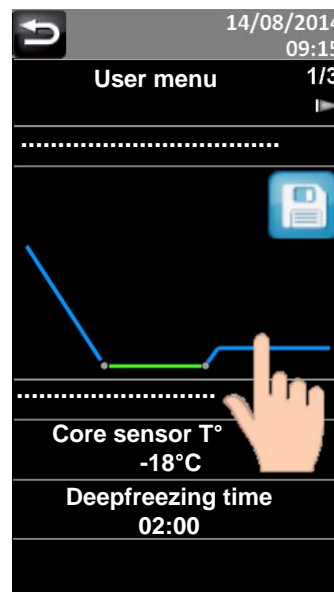


Touch the curve on the part you want to modify. The curve part linked to the current phase is green and flashes.

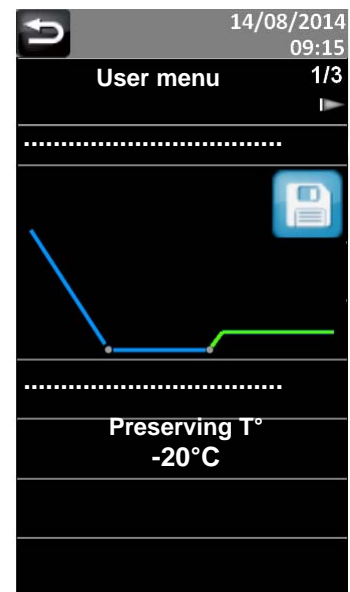


Caution : here, 2 touch areas (hours : minutes)

Preservation phase

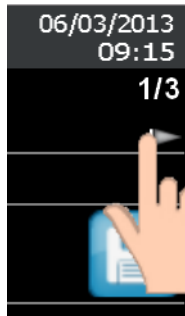


Do not forget to press the floppy disk icon to register the modification(s) done in the programs.

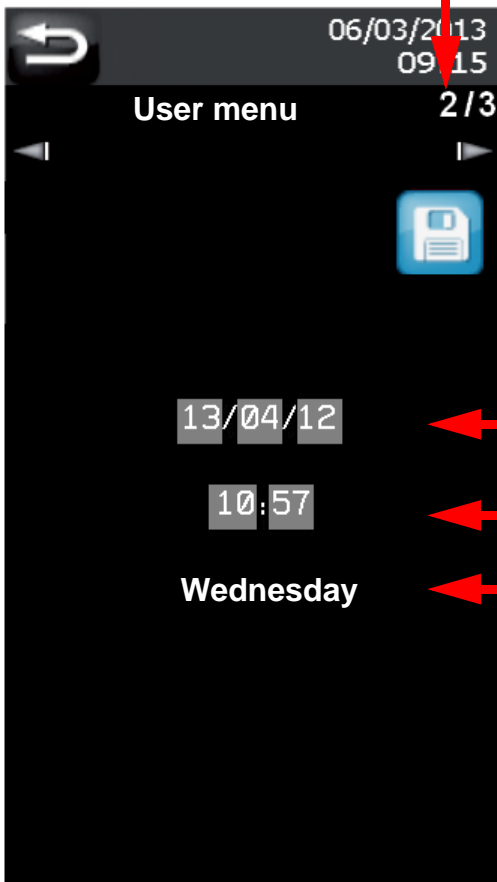


Setting ranges :	mini	/	maxi
T°loading of products :	-35°C	/	0°C
Core sensor T° :	-25°C	/	0°C
Deepfreezing time (incrementation : 10 mn) :	00:10	/	06:00
Preserving T° :	-20°C	/	0°C

Date and Time adjustments



Next page



DD / MM / YY

31/03/2013



MM / DD / YY

03/31/2013

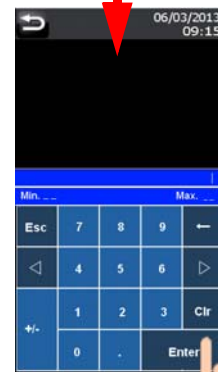
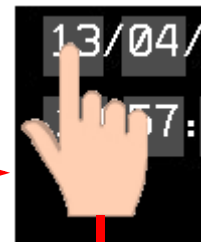


Date

Press on each zone to be modified.

Hour

Day (Automatically calculated in function of the date)



Press the floppy disk icon to register.

Date and time are updated in the gray band



CAUTION

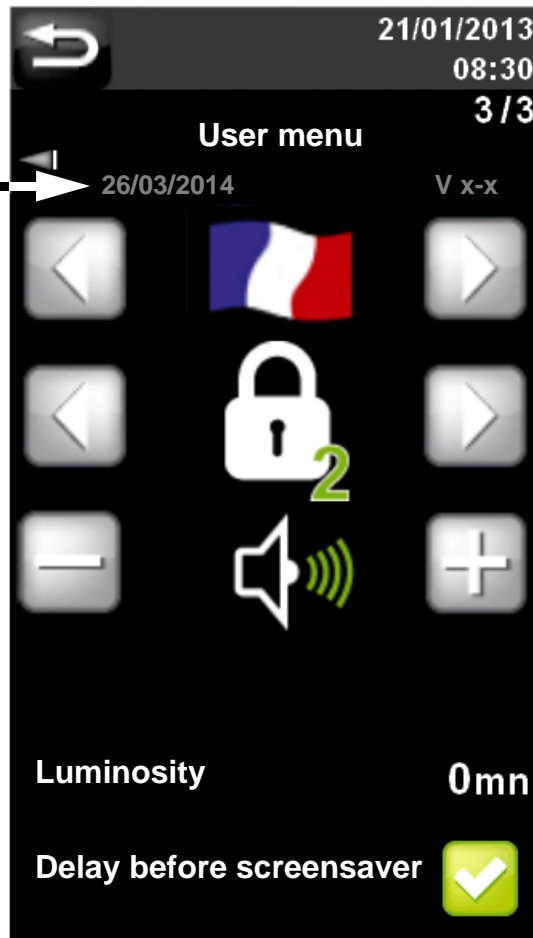
In the countries applying summer time and winter time, do not forget to modify the hour (the function is not automatic).

Setting of the regulator parameters



Next page

Translations file version



Language

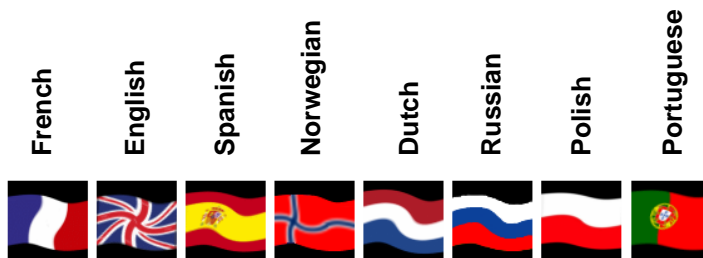
Access level

Beep keys

Brightness of the screen : adjustable from 50 to 100%

Screensaver : adjustable from 0 to 30 mn

Language :



Access level :



Beep keys :



DOWNLOAD AND UPLOAD OF THE RECIPES THROUGH THE USB STICK

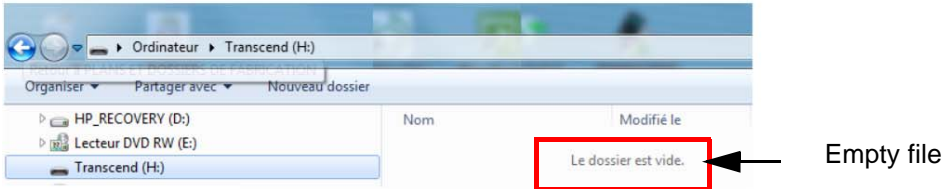
Download of the programs from the control board



Take a empty USB FAT32 formatted drive.

BEFORE

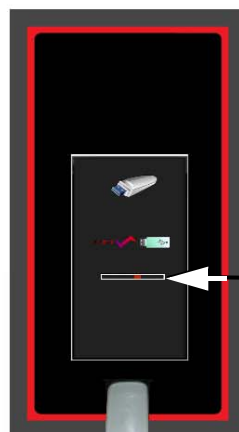
View of the USB stick content on a computer



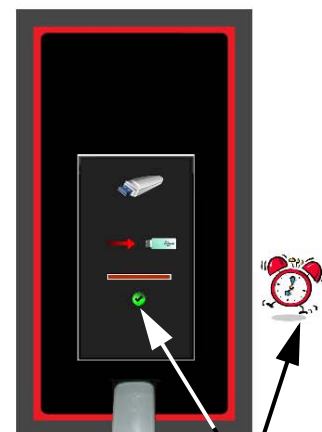
Control board starting-up by pressing the key.



Deep freezing



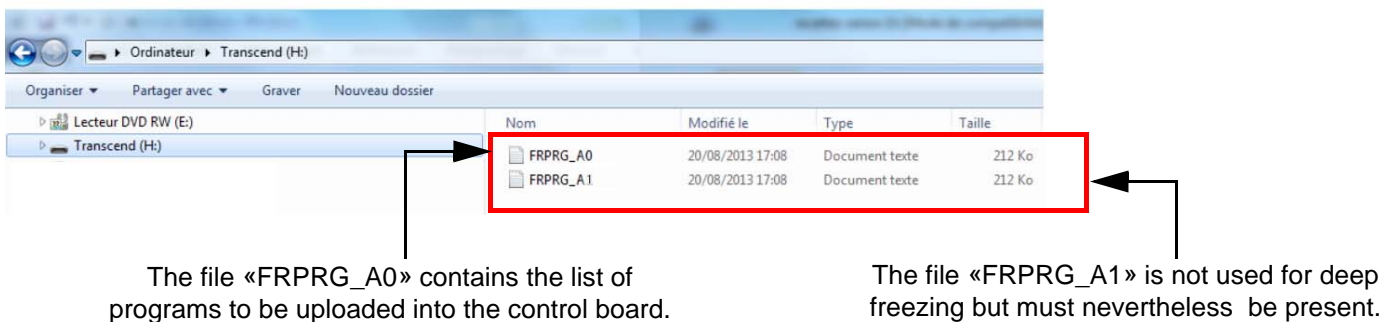
The transfer begins as soon as the USB stick is plugged.



Wait until viewing of the green icon and the ringing of the buzzer before removing the USB stick.

AFTER

View of the USB stick content on a computer



View of the programs file on a computer

FXPRG000 - Bloc-notes

Fichier Edition Format Affichage ?

Program	: MANUAL
Hygrometry	: 80%
Heating Element %	: 100%
Core sensor T°	: -18°C
T°loading of products	: -25°C
Deepfreezing time	: 02:00
Preserving T°	: -20°C
Proving temperature	: 0°C
Proving duration	: 03:00
Number of levels	: 10
Level T°	: 0°C
Level duration	: 00:10
End time	: 04:00
End day	: 1
Holding T°	: 0°C

Program	: 2.....
Hygrometry	: 80%
Heating Element %	: 100%
Core sensor T°	: -18°C
T°loading of products	: -25°C
Deepfreezing time	: 02:00
Preserving T°	: -20°C
Proving temperature	: 0°C
Proving duration	: 03:00
Number of levels	: 10
Level T°	: 0°C
Level duration	: 00:10
End time	: 04:00
End day	: 1
Holding T°	: 0°C

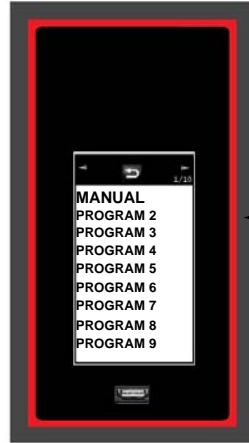
Program	: 3.....
Hygrometry	: 80%
Heating Element %	: 100%
Core sensor T°	: -18°C
T°loading of products	: -25°C
Deepfreezing time	: 02:00
Preserving T°	: -20°C
Proving temperature	: 0°C
Proving duration	: 03:00
Number of levels	: 10
Level T°	: 0°C
Level duration	: 00:10
End time	: 04:00
End day	: 1
Holding T°	: 0°C

Program	: 4.....
Hygrometry	: 80%
Heating Element %	: 100%
Core sensor T°	: -18°C
T°loading of products	: -25°C
Deepfreezing time	: 02:00
Preserving T°	: -20°C
Proving temperature	: 0°C
Proving duration	: 03:00
Number of levels	: 10
Level T°	: 0°C
Level duration	: 00:10
End time	: 04:00
End day	: 1
Holding T°	: 0°C

Parameters unused for a deepfreezer.

Upload of the programs in the control board

Installer menu :
Check the access
level



BEFORE

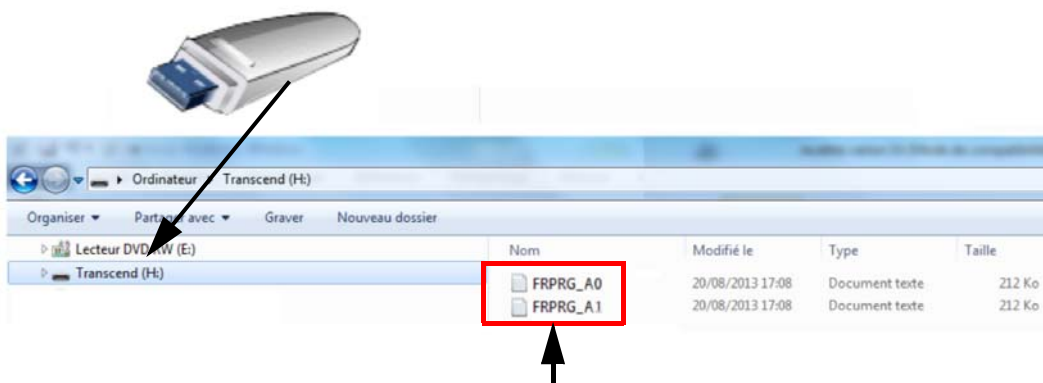
Viewing of existing recipes
before injection of new recipes
file.



IMPERATIVE



If the access level is adjusted on «0, 1, 2»,
the control board will not detect the USB stick.



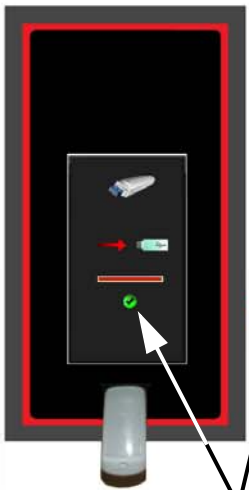
The files «FRPRG_A0 + FRPRG_A1» contain the list of programs to be
uploaded into the control board.



Deep freezing



The transfer begins as soon as the USB stick is plugged.



Wait until viewing of the green icon and the ringing of the buzzer before removing the USB stick.



Viewing of the new recipes file (FRPRG_A0)

AFTER

Disque amovible (J:)	Nom	Modifié le	Type	Taille
	FRPRG_A0.OLD	30/04/2014 09:31	Fichier OLD	55 Ko
	FRPRG_A1.OLD	30/04/2014 09:31	Fichier OLD	55 Ko
	FRPRG_A0	30/04/2014 09:15	Document texte	55 Ko
	FRPRG_A1	30/04/2014 09:15	Document texte	55 Ko

Before replacing both programs files from the control board by the new files «FRPRG_A0» + «FRPRG_A1» from the USB key, a copy of the original files is automatically recorded on the key as «FRPRG_A0.OLD» + «FRPRG_A1.OLD».